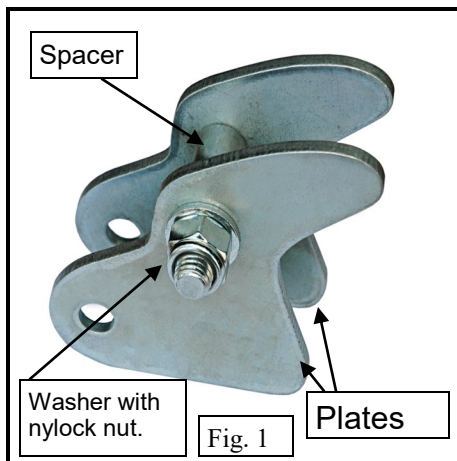


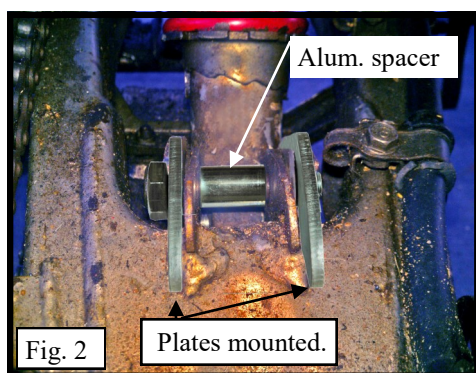
trx300ex Rear Lowering Kit

Part Number 20-1005

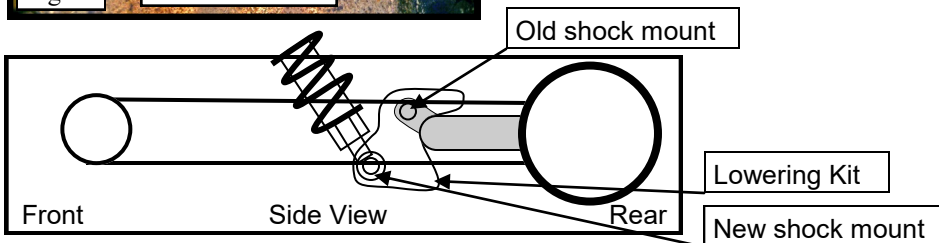
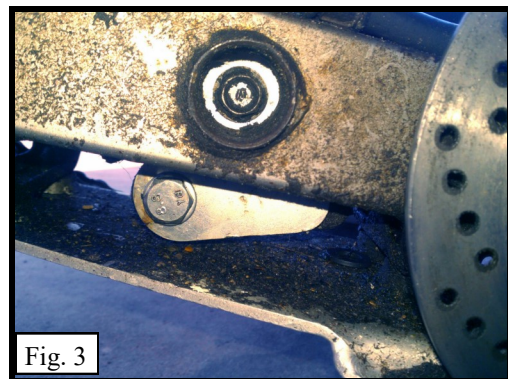


Note: Make sure you have received a complete kit. The picture (top left) shows all the parts and how they go together. (2 plates, 1 aluminum spacer, 1 bolt, 1 Nyloc nut with 1 flat washer).

- 1) Raise the rear end of the quad so the rear swing-arm is in a neutral position.
- 2) Remove the lower swing-arm shock bolt and swing the shock away from the hole.



- 3) The 2 plates of the lowering kit go on the outside of the old shock mount. Put the bolt through the plates and brackets. The aluminum spacer goes between the shock mounts. In some cases you may need to trim the plates to get the holes to line up. (See fig. 2)



Front ▲ Rear ▲
This is what the lowering kit will look like when you are finished.

- 4) Slide the shock into the lowering kit. Use your old nut and bolts to secure the shock. Bounce your quad up and down and check from binding.

Tips: Always use a lock washer with a nut. Quads vibrate so a nut without a locking washer will come loose and may come off!

About this product: This lowering kit is designed for extreme riding. The metal thickness of the kit is twice as thick of the metal on the old shock mount.

The main purpose of lowering your quad is better cornering and reducing the chance of accidental roll over. A front and rear lowering kit will lower your quad by 1-1/2 to 2 inches. This will reduce roll-overs by approximately 30 to 40%.

Final:

Make sure you tightened all the bolts. The large bolts can be torqued 37 to 40 lbs/ft. Pictures provided by customer Zachary Koehn.

This product is manufactured with pride in the USA